



---

Tel 01562-882116 Fax 01562-882126  
Email [baajnw@btinternet.com](mailto:baajnw@btinternet.com) Website [www.baa.uk.com](http://www.baa.uk.com)

---

April 2012

# **B.A.A News Anniversary**

On-line edition is a year old

## **We need your help!**

There have been a number of occurrences recently which have had a negative effect on the Associations fisheries. For example; the erection of a fence alongside the River Mease at Netherseal making access to the river difficult and the purchase of land alongside the River Avon at Lower Moor to be turned into a reserve for wild birds, restricting our access to the river.

In both examples the BAA was not made aware until the after the changes had occurred restricting our ability to have any impact on the outcome.

As a result of an article in the Evesham local paper, one of our members informed us of plans to install a low head turbine at Nafford Weir reducing the flow of water over the weir and through the weir pool by up to 90% and restricting our access to the downstream banks. Because of this early notification we can plan our campaign and engage the correct resources to fight this plan.

Early awareness is key to enable the BAA to have its say and protect our fisheries. What we are asking is for all our members to be our eyes and ears. If you hear of any plans etc which could impact our fisheries no matter how firm or vague, let us know by phone, email or letter to John Williams at Hagley HQ.



# Bailiffing

## Environment Agency Byelaws

Shown below are extracts from the Environment Agency Rod Fishing Byelaws for the Midland Region which should be of use and interest to our members and clarify situations which our bailiffs meet.

If you want to look at the complete set of Environment Agency Rod Fishing Byelaws Ctrl+click the hyperlink below;

[Environment Agency - Rod Fishing Byelaws](#)

*Byelaws are statutory rules and regulations put in place by the Environment Agency and which must be complied with by anglers. They exist to prevent damage to fish stocks from insensitive fishing methods and to make sure that fisheries are sustainable for the enjoyment of current and future generations of anglers.*

*These byelaws apply to all types of fisheries within the Midlands Region, be they owned by angling clubs, syndicates, local authorities or by private individuals. Whilst the fishery owners may impose additional more stringent regulations, they are not able to dispense with any of the fishery byelaws laid down by the Environment Agency. They may, for example, restrict the number of rods a coarse angler can use to two, if they feel it is in the best interest of their fishery. However, they may not remove the Agency's maximum limit and allow more than four rods to be fished.*

### **Eels** (Byelaw 3.e)

*During the period from and including the 15th day of March to and including the 15th day of June following, fishing by rod and line for eels is authorised on those waters where the statutory close season for freshwater fish has been dispensed with. This means you may fish with rod and line for eels in stillwaters (except those which are Sites of Special Scientific Interest) throughout the year.*

*It shall be lawful to fish for eels with a rod and line during the annual close season for freshwater fish in the Midlands Region, provided that the hook used shall have a gape of not less than 12.7 mm (0.5 inches).*

*This means you may only fish for eels in rivers, streams and drains in the region during the freshwater fish close season if the hook used has a gape of 0.5 inch (12.7 mm) or over however- there are no statutory tackle or bait restrictions when fishing for eels in stillwaters.*

### **PERMITTED METHODS OF FISHING** (Byelaws 5 and 10)

- i) It shall be lawful to use a rod and line and landing net or tailed used as auxiliaries to angling with rod and line for taking salmon, migratory trout, non-migratory trout, freshwater fish or eels.*
- ii) No person shall fish with more than one rod and line at the same time when fishing for salmon and trout in all rivers, streams, drains and canals.*

*No person shall fish with more than two rods and lines at the same time when fishing for salmon and trout in all reservoirs, lakes and ponds.*



No person shall fish with more than four rods and lines at the same time when fishing for coarse fish or eels.

NB. The use of three or four rods requires possession of two rod licences.

When fishing with more than one rod and line at the same time, the aggregate number shall not exceed four. **(NOTE: The BAA regulations state that on the Association's waters, no more than two rods may be used at any time and the rod used must be under the immediate physical control of the angler).**

When fishing with multiple rods and lines, rods shall be placed such that the distance between the butts of the end rods does not exceed three metres.

NB. This is a national byelaw.

iii) Any person who leaves a rod and line with its bait or hook in the water unattended or so that the person shall be unable at any time to take or exercise sufficient control over said rod and line shall be guilty of an offence.

NB This is a new national byelaw.

iv) No person shall use any form of line otherwise than in connection with a rod, i.e. handlines are illegal.

v) No person shall take or attempt to take or kill any salmon, trout, freshwater fish or eels by any of the following methods, that is to say, by tickling or groping the fish or by removing the water from any river, lake or pond by ladling, baling, draining or pumping.

#### **LURES AND BAITS** (Byelaw 11)

No person shall -

ii) in fishing with rod and line for trout or any fish other than freshwater fish during the annual close season for freshwater fish, use any float or bait (which term includes ground bait) other than artificial or natural fly (which term excludes bloodworms, jokers and other midge larvae), spinners, minnows, worms, prawns or shrimps.

NB. "any fish other than freshwater fish" excludes salmon for the purpose of this byelaw (see section 3).

This only applies to those waters which have a close season, i.e. rivers, streams, drains and canals. There are no statutory bait restrictions on stillwaters. So, if you wish to fish for eels on rivers during the coarse fish close season, you may do so providing that you use the above baits, do not use a float and use a hook with a gape of at least 0.5 inch (12.7mm).

Any person who in fishing for salmon, trout, fresh water fish or eels, uses as bait crayfish of any species whether alive or dead, or parts thereof, shall be guilty of an offence.

NB. This is a national byelaw banning crayfish as bait.

#### **KEEP NETS, KEEPSACKS AND LANDING NETS** (Byelaw 12)

No person shall -

i) use a keep net (for retaining any kind of fish) during the annual close season for freshwater fish in waters to which such a close season applies.



*You can, therefore, use a keepnet for retaining coarse fish in stillwaters during the close season on rivers and canals. However, many fishery owners impose their own rules and regulations - please check before you use a keepnet.*

*ii) at any time use a keep net for retaining salmon, trout, the parr or fry thereof.*

*iii) Any person shall be guilty of an offence if he uses:-*

*(a) a landing net with any knotted meshes or meshes of metallic material; or*

*(b) a keepnet -*

- with any knotted meshes or meshes of metallic material; or*
- having any holes in the mesh larger than 25 mm internal circumference; or*
- of less than 2.0 metres in length; or*
- with supporting rings or frames greater than 40 cm apart (excluding the distance from the top frame to the first supporting ring or frame) or less than 120 cm in circumference.*

*(c) a keepsack -*

- not constructed of a soft, dark coloured, non-abrasive, water permeable fabric; or*
- having dimensions of less than 120 cm by 90 cm if rectangular; or*
- 150 cm by 30 cm by 40 cm if used with a frame or designed with the intention that a frame be used.*

*NB. This is a national byelaw.*

*(iv) Any person shall be guilty of an offence if he retains more than one fish in a single keepsack at any time.*

*NB. This is a national byelaw.*

### **11. PROHIBITION OF USE OF CERTAIN LEAD WEIGHTS (Byelaw 17)**

*i) Subject to ii) below, no person shall use for taking salmon, trout, freshwater fish or eels in any waters within the Agency's area any fishing line to which is attached, directly or indirectly, any lead in the form of a lead weight.*

*ii) This does not prohibit the use of a lead weight of 0.06 grams or less, or of more than 28.35 grams.*

*For the purposes of this Byelaw:-*

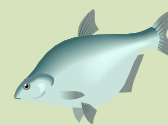
- "lead" includes any alloy or compound of lead;*
- "lead weight" means split shot or any other thing suitable for weighting fishing lines which is neither incorporated and fully enclosed in the core of a fishing line nor incorporated in the construction of a swim-feeder, a selfcocking float or a fishing lure;*
- "fishing lure" means any device, including a fishing fly, which is designed to attract fish and which incorporates a fishing hook.*

*NB. This is a national byelaw.*





# Fishing news



## Avon barbel – fish of the month!

I have been looking for a fish of the month form on your website but couldn't find one.

On the 12th January on my first visit to your Fladbury waters I caught a 14.1 barbel on double 11mm pellet.



On my next visit to Fladbury I caught an 8.12 barbel & 4 chub to 4.12 on pellet & bread respectively. My last trip of this season on the 14th March at Fladbury again I had a massive barbel of 15.4 on double 11mm pellet (photo's attached).



Regards, Chris Blunt

*Ed: Nice idea for a fish of the month, I'll select one each month from those sent in.*



## Early spring barbel

Dear Ed,

With reference to Neil's comments in the February news letter about my comments put in the January news letter concerning anglers fish weights, I did actually put "fair play" to his stated size but was more commenting on the other anglers stated weight not Neil's hence the fair play.

Attached is a photo of my PB barbel to date, caught on pellet and feeder tactics in the middle Severn on Saturday 3rd March weighing in at 13.5lbs.



The day turned out to be a good one with 12 barbel and 2 chub banked with several missed within a 5 hour session, I fished the Wednesday before and also did well with 7 barbel 2 chub and several lost, and ended that session with both my rods going off at the same time and both netted in the landing net together, the largest of the two being just over 8lbs, picture also attached. I hope to be sending a few more pictures before the close season, but if not maybe some specimen carp pic's when the weather turns milder and the fish start getting ravenous.

-----

Another 6.5hr session on the middle Severn produced another 9 barbel (Saturday 10th March) with two doubles and another one just under the 10lb mark (11lb pictured).





Tactics were open ended Korum feeders with 3mm pellet mix and hemp, size 7 barbless hook on 12" of 7lb braid hook length with halibut hook bait and very little free offerings. A brilliant start to March for me with over 200+ lb of barbel banked within 3 sessions and the two doubles on this date each taking over 15 minutes to bank leaving me exhausted. In between the doubles came a 7 & 8lber banked at the same time with both rods being used rocketing off together (has the previous weekend) and both being played into the net whilst another angler from two pegs down was having a chat, he also done well by the end of the day when asked walking back to the car park (hence him resting up mid day for the chat) and all in March..... the barbel sure have woken up, shame close season is upon us Wednesday 14th March.

-----

Here's another double pounder caught on the final day before season closure (14th March) this one tipped the scales over 12lbs, again I was on the middle Severn exactly the same tactics as my previous session posted at the weekend just gone.



The day was another smash with 13 barbel and 6 chub banked and a friend a couple of pegs down landed his PB making both our day and a brilliant end to the river fishing closure, we just can't wait until 16th June comes along to fish these brilliant BAA waters again.

Steve Swain



## Where to catch grayling

In response to Steve Halls' question about where to catch grayling on BAA waters. There is only one place, and that's the River Teme!!

I have had them to well over 1lb with 6 in a short session being my best (along with lots of trout). They are VERY pegged and localised so can be hard to find. So without giving away my best spot, go fishing and find them.

Maggots seem best method in medium / fast flow. I use a very small maggot feeder and light lines etc, size 20 hook. Cool weather seems best also, spring, autumn and winter.



I have included a picture of my first ever grayling from the Teme from a few years ago plus a nice trout (1lb 10oz) from the same stretch.

I have also included a picture of a barbel from the Teme which weighed 10lb 5oz as there are not many from the Teme in the barbel list. I think it was from Stanford Bridge.

Maybe you could split the barbel list into the different rivers that the BAA control so people will get a idea of what to expect when they go?

Hope all this helps.

Many Thanks,

John Morgan

*Ed: Thanks for your great photos. We have not included your barbel picture as it is such a good picture we've decided to hold it as a potential front cover for the next Guide to Waters booklet.*

*As you suggested I have modified the Fishing News Record list to show the rivers, pools and canals each type of fish was caught in.*



## More Teme grayling

Hello Members

I attach two photographs from the River Teme in February. The grayling was 13oz, caught on ledgered maggots. I caught four to exactly a pound, but the one of the pounder wasn't a good picture. You don't really get a second chance with taking pictures of grayling. They are too delicate to keep out of the water for a weighing and more than just a quick photo, plus my pictures are all taken on the self-timer.



The other reason my chosen picture is of the smaller fish is that the one that weighed a pound had a very large bite mark, and was rather unsightly. I strongly suspect the culprit was a mink. A week later I took the second photo. This was at Lindridge. It's not very clear, the mink appears as a black blob; but you don't get much chance for a second try with these pictures either!



It's a concern to see a mink, particularly with the river levels being so low.

Best wishes

Tim Gilson



## Wasperton barbel

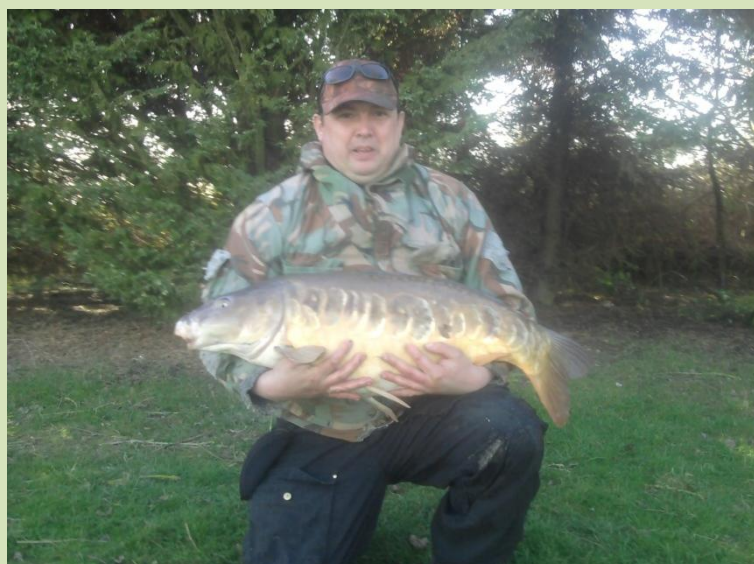
Hello,

Thought I should share my 10 lb barbel with you. Caught from the Wasperton stretch on Sunday 11th March, on meat, my last outing for 3 months.



Steve Welland, from Nuneaton

## Coppice mirror



Hi

Just thought I would send this picture of a 31 lb mirror carp I caught from Coppice Lake on Sunday the 25th of March, using a single boilie in middle of lake.

Regards, Michael Cross



## Kevins Coppice carp

Kevo of Birmingham here just to fill you in on the day of fishing I had with the other reprobait members at Coppice Lake.

I got to Coppice Lake about 5:30am to find one Colin at the gate so we parked our cars up, had a chat until there was some day light.

It's was now 6am and we can see the lake through the trees so start getting all the gear to the bank and set up.

I have a feeling of a good day ahead but at 8:30am still no bites.

Two Woody's the other two members of the reprobaiters at last they show there faces.

The hour's pass and the only one who's catching is Woody hooking into some bream and perch.

Sitting there chatting away to Dave who is focusing on the tip's of his rod's the next thing I know he's up and into a fish putting up a good fight and it's in the net a 13lb common carp.

More hour's pass and still no fish for me or Colin in fact the lake is dead no one was catching.

It's about 4:30pm my alarm screams out yes I'm into a fish on one of Colin's ocean 11 boilies Dave had his fish on the same boilies. It's in the landing net, very good fight and its 20lb of lovely mirror carp here are the photos.



Kevo of Birmingham



## Anniversary carp



Hi BAA,  
Had a trip to Coppice Lake on Saturday 24th and had this stunning 20lb 2oz common within the last half an hours fishing. Notice the gap in its tail, a real character to look out for in the future! :)

Thanks, Jack Parkes

*Ed: Thanks for your photo. The reason I titled it Anniversary carp, is the first picture we had in Fishing News in our first April 2011 edition was of you and 'Stumpy' a 26lb 2oz carp.*





# Fishing news record

## for last 12 months

fish/catcher	lb	oz	location	method	edition
<b>Barbel</b>					
<b>River Severn</b>					
Stephen Mayo	14	7	Mid Severn	10m DD ellipse pellet, hair rig 12 hook, hemp & pellet groundbait.	July 2011
Steve Swain	13	5	Mid Severn	Pellet and feeder	April 2012
Steve Swain	12		Mid Severn	Halibut pellet hook bait on size 7 hook, pellet & hemp feeder	April 2012
Steve Swain	11		Mid Severn	Halibut pellet hook bait on size 7 hook, pellet & hemp feeder	April 2012
Lee Wilkes	10	10	Arley	SBS Baits Frankfurter hooker.	July 2011
Reece Wilkes	9	7	Arley		Oct 2011
Dave Mantle	9	4	Highley		Nov 2011
Phil Milnethorpe	9		Stanley Waters		Nov 2011
<b>River Avon</b>					
Chris Blunt	15	4	Fladbury	Double 11mm pellet	April 2012
Chris Blunt	14	1	Fladbury	Double 11mm pellet	April 2012
Big John	14		Fladbury	2 x 8mm hair rigged halibut pellets on 12 hook with boilies & pellets in PVA bag on hook.	Nov 2011
Steve Hewitt	12	4	Wasperton		July 2011
Richard Edwards	10	4	Fladbury		Nov 2011
Richard Edwards	10	3	Fladbury		Nov 2011
Steve Welland	10		Wasperton	Meat	April 2012
Peter Niblett	9		Nafford	Hair rigged pellet.	Oct 2011
Chris Blunt	8	12	Fladbury	Pellet	April 2012
Tim Gilson	6	8	Nafford		Jan 2012
Dave Holland	6		Fladbury		Jan 2012
David Johnson	5	1	Fladbury	12m bloodworm boilie, barbel bomb & hemp groundbait	Mar 2012
<b>River Teme</b>					
Barry Hope	13		Broadwas		Oct 2011
John Morgan	10	5	Stanford Bridge		April 2012
Kevin Wilson	8	8	Stanford Bridge		Nov 2011



## Bream

### River Severn

Graham Cole	8	13	Birds Meadow		Nov 2011
Colin Townsend	8	8	Severn Stoke	8m halibut pellet hair rig on 10 hook. 2m halibut pellet & brown crumb feeder.	Aug 2011
Pete Jones	7	8	Birds Meadow	Magic Black ground bait feeder, small worm and red maggot on hook.	Dec 2011

### River Avon

David Johnson	7	5	Fladbury	Double 6mm elipse pellet.	Dec 2011
Oli Johnson	6		Fladbury	Double 6mm elipse pellet.	Dec 2011

### Pools

Shawn Townsend	5	8	Stubbs Pool	Mainline Cell boilies.	Dec 2011
----------------	---	---	-------------	------------------------	----------

## Common Carp

### Pools

Stan Kovachev	34	2	Coppice		July 2011
Phil Wood	26	4	Coppice	Mid water boilie.	June 2011
Carl Gerroni	24	7	Nordley 4		June 2011
Kevin Smith	21		Coppice		Oct 2011
Jack Parkes	20	2	Coppice		April 2012
Daniel Ambrose	20		Coppice		June 2011
Kevin Smith	17		Coppice		July 2011

### Canals

Will Peace	18		Worcester Canal, Alvechurch		Sep 2011
------------	----	--	-----------------------------	--	----------

## Leather Carp

### Canals

Steve Ridd	13	5	Trent & Mersey Canal, Fradley	Foul hooked when plugging for predators	Feb 2012
------------	----	---	-------------------------------	---	----------

## Mirror Carp

### Pools

Steve Middleton	31	+	Coppice		June 2011
Brendon Almquest	31		Coppice		Nov 2011
Michael cross	31		Coppice	Single boilie	April 2012
Greeny	24		Coppice		Oct 2011
Kevin Smith	20		Coppice	Boilie	April 2012
Keith Jones	19	8	Nordley 1		May 2011



## Chub

### River Avon

Chris Blunt	4	12	Fladbury	bread	April 2012
Tim Gilson	3	10	Nafford	Luncheon meat.	Jan 2012

## Grayling

### River Teme

Tim Gilson	1	0	Lindridge	Ledgered maggot	Apr-12
------------	---	---	-----------	-----------------	--------

## Perch

### Pools

Tim Gilson	2	9	Coppice	Float fished maggot.	Jan 2012
------------	---	---	---------	----------------------	----------

## Pike

### River Avon

Jonathan Harcourt	18	7	Fladbury	Wobbled smelt.	Oct 2011
Neil Walker	16	7	Fladbury	Paternostered sardine.	Feb 2012
Neil Walker	13	9	Fladbury	Paternostered sardine.	Dec 2011
Tom George	13	8	Fladbury	Lamprey dead bait.	Dec 2011

## Tench

### Pools

Cliff Townsend	6	4	Mythe Pool	Red maggot block end feeder.	Nov 2011
Tim Gilson	4	3	Apperley		Oct 2011

## Zander

### River Avon

Rob Hawkswood	8	8	Pensham	Ledgered mackerel.	Jan 2012
---------------	---	---	---------	--------------------	----------





# Archive extracts



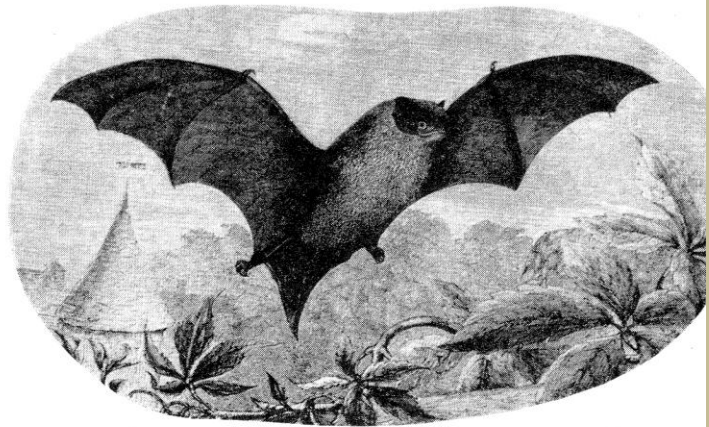
## Midland Angler

Copied below are two extracts from the April 1959 edition of the Midland Angler, the forerunner to the BAA News.

*Your Waterside Companions . . .*

by 'TAG' BARNES

### THE PIPISTRELLE — First of The Radar Experts



ANGLERS who fish at dawn and dusk will be familiar with a small bird-like creature that performs wonderful aerobatics, twisting and turning over the water in the half light of day before miraculously flitting with unchecked speed and unerring accuracy between the branches of the trees.

It is most likely to be the commonest and smallest of our British bats—the pipistrelle, the first of the radar experts.

All bats have small eyes and poor eyesight and it was many years before science discovered how they managed to perform such aerial displays without coming to grief by dashing themselves against some obstruction or other.

It is now thought that they possess a very intricate mechanism which enables them to emit high pitched sounds, which they receive back whenever they meet a solid object in their path—a very similar principle to modern radar equipment.

Pipistrelles have a wing span of about 8 inches. Their mouse-like bodies are covered in long silky hair which is kept well groomed by constant licking with the tongue. Despite this washing, however, bats are often infested with parasites, which makes them unwelcome guests if they ever take up residence in inhabited quarters.

They spend most of the day sleeping,

in colonies, in the roofs of old buildings, in holes in trees, or caves and crevices in rocks. They also hibernate in such places during winter.

It is quite an experience to find a colony of bats hanging by the feet upside down with their membranous wings wrapped tightly round their bodies. One young a year is born, blind and naked, and is suckled by the mother; she also flies with it clinging to her breast for about the first fortnight of the infant's life.

The food of bats consists wholly of insects which are caught in flight. Bats also drink while on the wing, and if you watch closely you will see them pause over the water for a brief moment with their wings held up while they take a quick sip.

It is not unknown for a bat to take the artificial fly of anglers fishing at night for sea-trout. One such incident was described in "Anglers' Forum" a couple of years ago by Mr. R. B. Taylor, of Birmingham, who related how he had rescued a bat that had mistaken an artificial fly on the end of a piece of line tangled in a tree branch for a natural insect.

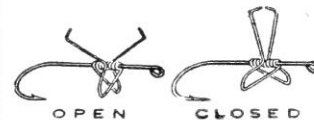
A less painful feature about bats is that by bending their tails forwards they can form a sort of pouch. Into this they pop any insect taken in flight which is too large to be mastered. After it becomes subdued in the pouch it is removed and eaten.

Because bats are somewhat fearsome looking creatures they are often

destroyed by ignorant people who do not realise how harmless they are and how much good they do by destroying thousands of mosquitoes and other insect pests. They are usually the same kind of people who kick a pike to death immediately they have it on the bank, or beat to a pulp a sleeping grass snake.

Personally, I am always pleased to see little pipistrelles hawking over the water—especially when I am settling down for a spell of night fishing and am being "eaten alive" by mosquitoes!

#### THE 'AYRBRO' LIVE FLY HOOK



Pat. No. 797327

Without doubt live fly fishing is a deadly method of killing trout and chub, and is often the means of tempting exceptionally heavy and shy fish. Suitable baits include Mayflies, Blue-bottles, Daddy Long-legs, Grasshoppers and Beetles of many species, also White Grubs. The "Ayrbro" hook is fitted with a small spring clip, which permits the fly or insect to be mounted instantly and without killing it. Stocked in sizes 6, 8, 10, 11, 12 & 14

Wholesale only from  
THE AYRBRO LIVE FLY HOOK CO.  
Compton Coney Road,  
East Wittering - Sussex



# STOP THIS SENSELESS SEVERN SLAUGHTER!

says

**GRAHAME A. WRIGHT**

**Most anglers preserve their future sport by returning all the coarse fish they catch. With twaite shad, which in a few weeks time will be ascending the Severn to spawn, the story is very different.**



*Two-pounders are game fighters; weight for weight they are far superior to well-conditioned pike.*

I THINK it would be true to say that nowadays most coarse fish anglers are sportsmen who respect the fish they catch and do not kill merely for the sake of killing. There are exceptions, of course, but in the vast majority of cases every roach, chub, dace or other coarse fish that falls for a bottom fisher's bait stands a pretty good chance of finishing up back in the water, none the worse for its experience.

But what a different fate awaits those beautiful fish, the twaite shad, that ascend the Severn every year to spawn! During May and early June it is a common sight to see scores of anglers in the Tewkesbury area killing every twaite they catch. Often they can be seen staggering home at the end of the day with as many as twenty or more weighing down their creels.

Why do they do it? Why do anglers who would never dream of taking home a chub or a dace act completely contrary to their usual principles when twaite fishing?

Maybe the fish provide a little pocket money via the fishmonger, although this is hardly likely in view of the fact that their flavour is rather muddy and the flesh full of minute bones. The only edible part is, in fact, the female's roe, which I am told resembles that of a herring.

The really tragic part about this annual slaughter on the Severn is, however, the fact that the twaite shad are such splendid fighters. Weight for weight they are far superior to a well-conditioned pike, and a two-pounder will leap out of the water just as spectacularly as a sea trout. They are actually akin to the tarpon, those tremendously strong fish that attain a weight of over 200 lb. and provide Americans with such exciting sport off the coast of Florida.

When they ascend the Severn each year, their sole aim is to get as high up the river as possible before spawning, although many get no further than the weir pool at Tewkesbury where in a good season they congregate in their hundreds. The determined ones, however, pass over the weir via a fast apron of water known locally as the "Salmon Shoot." They provide a fascinating spectacle as they fight their way up the current time and time again, the tips of their dorsal fins and tails protruding out of the water and causing an arrow-shaped disturbance before they finally succeed in surmounting the obstacle.

It is when the twaite start to run in this manner that sport for anglers commences in real earnest. Visitors

from far and wide descend upon Tewkesbury Popular A.C. waters below the weir. The methods they use are legion. Some advocate the use of a fly, others, until River Board restrictions ruled them out, float fished with an elver as bait. From my experience, however, the deadliest method is light spinning with a fly spoon—provided it is fished properly.

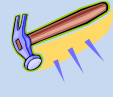
Many anglers seem to prefer spinning in the normal way, i.e., casting out and retrieving with rod point low and the spinner working deep—a method that can be disastrous and costly on a weir pool because of the numerous and inevitable snags. The best way is to spin with the rod almost perpendicular, thus keeping the lure just below the surface. This not only prevents losses but also presents the bait at the right depth for twaite, which usually cruise around close to the top of the water.

These obliging visitors from the sea are a wonderful cure for close season blues, but they are very sensitive to pollution and are becoming something of a rarity in British waters. There will be fewer still if Severn anglers do not put a stop to the senseless slaughter that occurs in the Tewkesbury area every year.





# Fisheries report



The Fisheries Work party has carried out work at the following fisheries since the last edition;

Coppice Lake - All platforms replaced with 39 new ones, steps have been put in place where required to allow safe access to the platforms where the bank is steep. Trees have been trimmed near to the pegs and alongside the bank path and litter cleared.



Uckinghall - Pegs repaired, sign erected and litter cleared.

Mythe Pools - Sign erected and gate post replaced.

Nordley Pools - Trees and vegetation cut back alongside Pools 1, 2 and 3 to allow JCB access to carry out gully work. Planted oaks have been retained, mainly ash trees removed which will naturally and quickly re-grow when work completed.

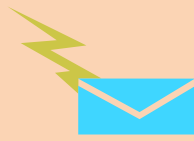
Drainage pipe connected to existing pipe alongside Pool 1 extending pipe to end of Pool 2, gully back filled. Removal of silt from gully alongside Pool 3 commenced, this will continue alongside Pool 4 in April. As a result of this work the path alongside Pools 1, 2 and 3 is very muddy, this will improve as the vegetation re-grows in the spring.

## Lost & Found

### Found - landing net

A landing net has been found at Coppice Lake by the Bailiff on Saturday 7<sup>th</sup> April. If it's yours please contact Dave Webb (Superintendent Bailiff) on 07973 624419 and he will arrange return.





# Readers' letters



If you have any items, thoughts, issues you want to air in the BAA news, please email it to [baajnw@btinternet.com](mailto:baajnw@btinternet.com) titled for attn of BAA News Editor.

When sending in a comment can you please let us know if you don't want your name included?

The Editor will act as moderator for items to be included.

-----

Hi,

With regards to your recent March newsletter, Steve Hall should be able to catch grayling from the Teme in most places. I've caught 3 in succession at Eardiston in the swim right on the bend in the car park on maggot feeder and maggot as bait. There are also a lot of trout about.

Phil Wood

-----

Hi Ed

I managed to get a couple of hours fishing in on the way home last week (March) at Lindridge on the River Teme.

I had 4 grayling on the maggot feeder and loads of bites. Parking is easy as is access to the River; however it's a bit of jungle warfare to get to a peg due to a lot of fallen trees. The only thing that would have made it better would have been if I could have had them running a float through? But still great fun.

Regards Andy Marsh

-----

Dear Ed

In response to Steve Hall's request, Fordon used to be fantastic venue with some big chub as well. Hope this helps.

Rob Holland

-----

Greetings,

I've just read March Newsletter and someone asked about places to catch grayling. I've had a good number from the Teme at Eardiston and Stanford Bridge. Stick float and maggot should do it.

Regards, James Stubbs



*Ed; thanks to all who have sent in pictures and guidance for Steve Hall in his quest to catch grayling. It shows we have a community in the BAA with a good store of knowledge and the willingness to share it to help other members.*

-----  
Hi

I read with dread the report on the litter problem at Coppice.

I admit that I have only ever visited Coppice on a few occasions and on those occasions litter did not seem to be a problem.

However from reading the latest newsletter the situation seems to have gotten out of control and is very disturbing.

Being blunt it does seem to be the bivvie boys that are causing this - says a lot for carp anglers!

My suggestion is to put a sign up at the fishery that should litter still be a problem after June 1st all carp over 10 lbs will be netted and removed.

(I'm uncertain to the costs of such removal but in the long term it would be beneficial to the fishery).

These can be used to re-stock Nordley or Stubbs pool where the anglers are more conscientious!

Should the bivvie boys not heed this notice and remove their litter they will only have themselves to blame when they have no carp over 10lbs to fish for.

Carp up to ten pounds should satisfy the average angler and still provide sport.

It's a sad thing when a minority ruin a day's activity for the majority, but in this 'PC' society, there is not a lot that can be done unfortunately.

Regards

Peter Mander  
-----

Dear Sir,

With reference to the March newsletter and rubbish left behind, unfortunately it will always happen; you can't teach pigs to be human beings.

Member S02720.  
-----

The council have reduced litter by opening rubbish bags and looking for any type of a clue to the owner. I know it's difficult and not a nice job but maybe we should examine the contents and then follow up with expulsion from the club if proved.

Mr C.G Austen  
concerned BAA member