

Est. 1883



Tel 01562-882116 Fax 01562-882126
Email baajnw@btinternet.com Website www.baa.uk.com

February 2012

Guide to Waters 2012

2400 already sold, see readers letters.

Satnav directions to our Fisheries

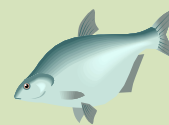
See pages 14-16

Lost a bird watching lens at Coppice?

See Lost & Found pages 18 & 19



Fishing news



Leather carp record?



I notice that in the 'Records' list there are entries for 'Common Carp' and 'Mirror Carp' but nothing for 'Leather Carp'...

Well, I have had a 13lb 5oz Leather Carp (totally unscaled) from the Trent & Mersey canal at Fradley this last weekend... unfortunately though I cannot lay claim to it as at the time I was plugging for predators and actually foul hooked the beast in the root of the dorsal fin.

Still, I'm appending a (poor, as I had to make use of camera's self timer as I was on my own) pic for your info <<...>>

Cheers

Steve Ridd

An even bigger one!



Hi,

I have just read the January Newsletter with interest and in particular the comments regarding the pike caught at Fladbury. I can fully appreciate the writer's comments about the apparent difference in sizes and also the fact that the picture is enhanced if the fish is held away from the body. I have no issue with these comments other than to assure the writer that my fish was weighed and witnessed by two other anglers, my dad and another angler nearby.

Anyway, following the receipt of my full membership (thanks) I paid another visit to Fladbury (the new meadow) on 15th December and again float fishing a paternostered sardine I bettered my previous fish with this one that weighed in at 16lbs 7ozs. It was the only fish of the day but it was well worth waiting for.

Thanks

Neil Walker.

Fishing news record

fish/catcher	lb	oz	location	method	edition
Barbel					
Stephen Mayo	14	7	Mid Severn	10m DD ellipse pellet, hair rig 12 hook, hemp & pellet groundbait.	July 2011
Big John	14		Fladbury	2 x 8mm hair rigged halibut pellets on 12 hook with boilies & pellets in PVA bag on hook.	Nov 2011
Barry Hope	13		Broadwas		Oct 2011
Steve Hewitt	12	4	Wasperton		July 2011
Lee Wilkes	10	10	Arley	SBS Baits Frankfurter hooker.	July 2011
Richard Edwards	10	4	Fladbury		Nov 2011
Richard Edwards	10	3	Fladbury		Nov 2011
Reece Wilkes	9	7	Arley		Oct 2011
Dave Mantle	9	4	Highley		Nov 2011
Peter Niblett	9		Nafford	Hair rigged pellet.	Oct 2011
Phil Milnethorpe	9		Stanley Waters		Nov 2011
Kevin Wilson	8	8	Stanford Bridge		Nov 2011
Tim Gilson	6	8	Nafford		Jan 2012
Dave Holland	6		Fladbury		Jan 2012

Bream

Graham Cole	8	13	Birds Meadow		Nov 2011
Colin Townsend	8	8	Severn Stoke	8m halibut pellet hair rig on 10 hook. 2m halibut pellet & brown crumb feeder.	Aug 2011
Pete Jones	7	8	Birds Meadow	Magic Black ground bait feeder, small worm and red maggot on hook.	Dec 2011
Oli Johnson's Dad	7	5	Fladbury	Double 6mm elipse pellet.	Dec 2011
Oli Johnson	6		Fladbury	Double 6mm elipse pellet.	Dec 2011
Shawn Townend	5	8	Stubbs Pool	Mainline Cell boilies.	Dec 2011

Common Carp

Stan Kovachev	34	2	Coppice		July 2011
---------------	----	---	---------	--	-----------

Phil Wood	26	4	Coppice	Mid water boilie.	June 2011
Carl Gerroni	24	7	Nordley 4		June 2011
Jack Parkes	23	5	Coppice		April 2011
Kevin Smith	21		Coppice		Oct 2011
Daniel Ambrose	20		Coppice		June 2011
Will Peace	18		Worcester Canal, Alvechurch		Sep 2011
Kevin Smith	17		Coppice		July 2011

Leather Carp

Steve Ridd	13	5	Trent & Mersey Canal, Fradley	Foul hooked when plugging for predators	Feb 2012
------------	----	---	-------------------------------	---	----------

Mirror Carp

Steve Middleton	31	+	Coppice		June 2011
Brendon Almquest	31		Coppice		Nov 2011
Curtis Holdom	26	2	Coppice		April 2011
Greeny	24		Coppice		Oct 2011
Keith Jones	19	8	Nordley 1		May 2011

Chub

Tim Gilson	3	10	Nafford	Luncheon meat.	Jan 2012
------------	---	----	---------	----------------	----------

Perch

Tim Gilson	2	9	Coppice	Float fished maggot.	Jan 2012
------------	---	---	---------	----------------------	----------

Pike

Jonathan Harcourt	18	7	Fladbury	Wobbled dead bait (smelt).	Oct 2011
Neil Walker	16	7	Fladbury	Paternostered sardine.	Feb 2012
Neil Walker	13	9	Fladbury	Paternostered sardine.	Dec 2011
Tom George	13	8	Fladbury	Lamprey dead bait.	Dec 2011

Tench

Cliff Townsend	6	4	Mythe Pool	Red maggot block end feeder.	Nov 2011
Tim Gilson	4	3	Apperley		Oct 2011

Zander

Rob Hawkswood	8	8	Pensham	Ledgered mackerel.	Jan 2012
---------------	---	---	---------	--------------------	----------



Nature views

At the suggestion of Graham Beck (see Readers' letters) I have added a new section for non fish pictures from our fisheries. This can include views and wildlife with a few words of description to be included with the picture. I have added pictures for this month to get it up and running

Swans and mist



This picture was taken in the summer of 2010 in the weir pool at Holt Fleet. The swan is feeding while junior hitches a ride.



This picture is of a misty November day at Wasperton in 2010.

Old School



This very atmospheric picture was submitted by Martin Baker as a proposal for the Guide to Waters 2012 cover picture with the text below.

This was taken at Eckington and reflects 'old school' BAA fishing with clubs as the mainstay rather than big fish angling. It shows an early morning start with a group of die hard anglers who socialise on the bank as well as fishing and making their way along the river for a day's fishing. The club is the Public Lighting AS.

Best regards, Martin Baker



Executive update



Executive Committee membership

After our request in the January issue, we have had four additional members join the Executive Committee.

Coppice Lake

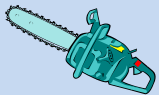
The water level is currently rising after recent rainfall.

Junior day

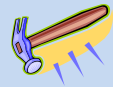
It is planned to hold two juniors' days at Coppice Lake this year on the 11th August and 22nd September. The lake will be closed for fishing on those dates. Look out for further information in the BAA News and on the website.

Evesham Festival

The BAA is planning to have a presence at the 2012 show in August. Look out for further information in the BAA News and on the website.



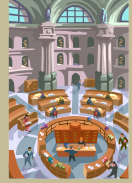
Fisheries report



The Fisheries work party has carried out work at the following fisheries since the last edition;

Cutting back of vegetation alongside Nordley Pools 1 and 2 especially the brambles (on the left of the pools looking towards Pool 3) as these were spreading and making the path narrow. This will be continued for the remaining pools during February. It is also planned to lay a pipe in the culvert alongside pool 2. When this has been done the culvert will be back-filled to cover the pipe.

Alongside the River Mease at Netherseal it is planned to upgrade existing stiles over the new fence to the BAA standard and install additional stiles where required.



Archive extracts

Midland Angler February 1958

DICK WALKER'S CHOICE WAS A "CABBAGE PATCH" . . .
FRED TAYLOR PREFERRED AN "ONION BED" . . . AND NOW—



The author, a member of the Oxford Specimen Hunters' Group, with a nice brace of roach.

Give Me A 'Compost Heap'

Says PETER STONE

THE "cabbage patches" recently recommended by Richard Walker, and Fred Taylor's "onion beds," are indeed excellent places to fish, but I prefer something different—a "compost heap."

As you can imagine, I am referring to one of the many obstructions that can be found on practically any stretch of river—an obstruction formed usually by a branch of a tree that has been swept down river until it finally came to rest. Against this branch all sorts of rubbish piles up and before long it forms itself into what might be termed an aquatic compost heap.

But apart from the debris swept down by the current a "compost heap" also attracts something else—food—and, in consequence—fish. Chub, dace and roach in particular love to get out of the main current and ferret around in the rubbish. If there are trout about it is pretty certain that they too have a home not very far away.

How can you discover the whereabouts of a "compost heap"? If the river is fairly shallow, say five to six feet, it is easy to spot a likely

place by the disturbance on the water's surface. By this I mean a patch of water eddying around after hitting the obstruction. In deeper water this will not be possible, unless you take a walk along the banks in summer when the water is low and pinpoint the suitable places.

"Compost heaps" can be tackled with either float or ledger—both are equally effective—but when using the latter method it is as well to sit as close upstream of the "heap" as conditions will allow. The bait can then be comfortably cast over and beyond the obstruction so that it comes to rest where the fish are sheltering.

It will be difficult to keep a tight line, so wait until you feel a pluck, give the fish a couple of seconds and then tighten. Remember, too, that there is an obstruction between you and the fish, and that you will have to handle your roach with care to avoid getting snagged. Worms and cheese-paste are the baits I have found to be most successful when ledgering in this manner.

When float fishing it is advisable to adjust the float so that the bait is just off the bottom (an inch or so is just right) and bunch the shot about 12" from the hook. If maggots are the bait—and they are my first choice—it helps if a handful is thrown in now and again. But make sure that they come to rest your side of the "heap" and do not go over it. They will then percolate through slowly and enticingly.

Having placed yourself upstream of the "heap," the job of manoeuvring your tackle down and over may seem rather difficult. The best way is to float it down gently with only the hook and the lead in the water, then, when you know you have passed the obstruction, drop the rod point quickly so that the float cocks in just the right place. This may sound difficult but after a little practice—and maybe the loss of a few hooks!—it becomes quite easy. Whatever happens, do not be tempted to move down below the obstruction. It would certainly help you to cast and land fish more comfortably, but it would also scare away every fish that would otherwise have stayed put.

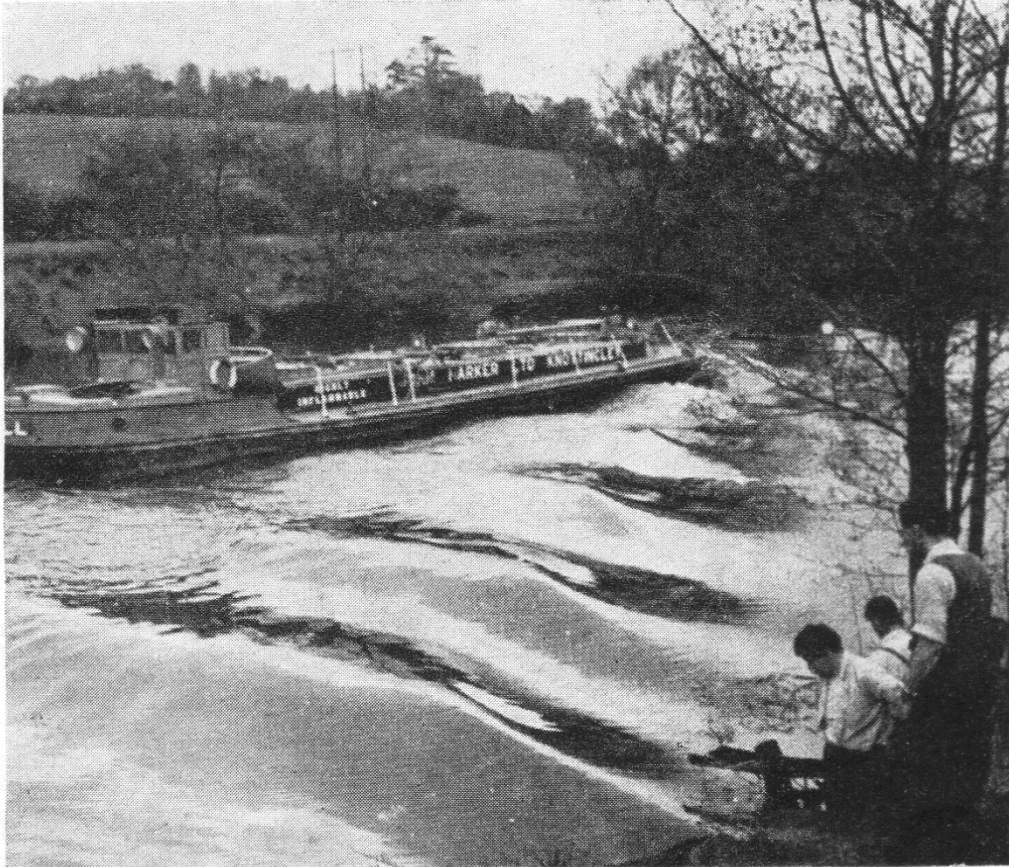
When you hook a fish try to coax him out into the open current as quickly as possible, and at the same time throw in one or two maggots (making sure that they land in the right spot) in order to give the remaining fish something to interest them.

Sounds difficult—and hard on hooks—doesn't it? But it isn't really, provided you fish with care.

Try it yourself and see. Next time your favourite stream is low and clear, take a walk along its banks and look out for a suitable bough that has come to rest on the bottom. Resist the temptation to pull it out and leave it where it is. Then, when the river rises and other debris joins it, you will have a first-rate "shop"—a "compost heap."

It's High Time This Menace was Stopped

says H. L. VERNON



Take cover—or the consequences—is the warning note
note of the Severn's petrol tankers.

How much longer will anglers visiting the lower Severn have to wait before something is done about the excessive speeds of the petrol tankers that travel up and down the river?

The question of limiting the rate at which these juggernauts travel from Gloucester or Bristol up to Stourport has been discussed many times in the Press and elsewhere, but that seems to be as far as we get. The tankers still tear up-stream and down, creating a wash heavy enough

to sweep any unwary angler and his tackle into the river.

They are spoiling the fishing and doing a tremendous amount of damage to the banks, too. Many pitches that look invitingly safe are in fact death traps. The banks are heavily undercut and are liable to collapse completely at any moment.

Must we wait until the fatal accident occurs before the River Board, or whoever else is responsible, does something in the matter?

Midland Angler February 1962

TAG BARNES' Specimen Hunter's Diary

UPSTREAM ledgering is undoubtedly practised more by specimen hunters rather than by other anglers, but even amongst the big fish boys it is still a much neglected method. The reason, I suppose, is because ledgering a bait upstream is alien and contrary to all we have previously learnt about coarse fishing.

The line hanging from the rod tip that indicates a bite by suddenly dropping slack instead of tightening requires a certain amount of readjustment on the part of the angler. And if we are accustomed to ground-baiting a downstream swim, letting the current carry the bait, we are apt to feel somewhat lost when faced with the task of baiting a swim above where we are fishing.

In most cases upstream ledgering is carried out during the summer months when we can cast our bait to a fish we can see or into a known fish-holding swim. At these times groundbait is seldom necessary. Where I believe we slip up, however,

Try Upstream Ledgering For Winter Chub

is in neglecting to use the method during the colder months of the year—and I am as guilty as the next.

Friend Reg and I recently returned to the river Bain to have another go at its chub, this time accompanied by club member Frank Whiteley. It was Frank's first visit and we placed him in a swim that invariably produces a fish, although we didn't hold out much hope on this occasion because of the seven degrees of frost present. However, by the end of the day he had managed to net six good chub, all taken on lobworm ledgered upstream.

In the meantime Reg had spent much of his time wandering and casting a line into various likely spots. It is interesting to note that the fish he caught all came from one swim—under the roots of a willow which stands on a very sharp bend.

Whilst they were going their various ways I had pushed on well up the river to the bridge beneath which, on our last summer visit, we had seen a shoal of chub. This time the river was coloured and the fish were not visible, but nevertheless I decided to fish the swim and started proceedings by throwing a handful of worms into the water at the other side of the bridge.

In this particular swim one has no option other than to ledger upstream, for the fast water above the bridge is culverted between high concrete walls. But despite the pull of the current I found that the bait would hold in position with only a single swan shot pinched on the line. I soon discovered too that the cast needed to get the bait well under the arch needed correct timing and accuracy; if the bait was not thrown far enough, no bites were forthcoming.

Even when the bait did reach the right spot the bites were not exactly plentiful. During the first three hours the line from the rod point only fell completely slack on five

occasions as a fish picked up the bait and moved towards me. Four of my strikes connected and each time I hit a chub of between 2-lb. and 3-lb. But the two grandfathers of the shoal I had observed during the summer continued to elude me.

The fourth hour was a complete blank, so I decided to bait the swim with cheese. Half-a-pound of it went in above the bridge, but before I could test the worth of this fresh bait a party of schoolchildren escorted by their teacher came along the bank. As all children will, and as I feared, they made straight for the bridge and amused themselves for ten minutes jumping up and down on the planks and dropping stones in the water.

There was nothing to do but wait until these healthy youngsters moved on, so after taking a snap of the fish I had a 'snap' of my own. I did, however, manage to catch one more chub after they had gone. It took a worm, again ledgered upstream.

Reflection since then has convinced me that even in winter, upstream ledgering has several advantages over other methods, not least the fact that you are behind your fish and there is less chance of them seeing you. It also seems less disturbing to a shoal when one of its members is quietly pulled downstream instead of threshing and struggling upstream against the current.

The secret of success with this method lies in using a weight that will only just hold bottom. This ensures that when a fish picks up the bait and turns downstream, as it usually does, it feels only a minimum of resistance. Try it, and you will be amazed how little lead is required in even the strongest of currents.

**Hire a 1961
car in Ireland**

from

RYANS

SELF DRIVE

19/20 PEARSE ST., DUBLIN
Telephone: 76771

Also at Cork, Limerick, Belfast

Caravans available for towing
Fishing tackle for hire



Readers' letters



If you have any items, thoughts, issues you want to air in the BAA news, please email it to baajnw@btinternet.com titled for attn of BAA News Editor.

When sending in a comment can you please let us know if you don't want your name included?

The Editor will act as moderator for items to be included.

Dear sir, in reply to the letter from J C Stubbs about the 2012 handbook cover [January news letters], first and foremost Mr J C Stubbs, as you are of such high moral ground, perhaps it would not be unreasonable to have the decency to offer Lynn Dyson an apology for suggesting that she is the content of pictorial smut, smut was the word was it not.

At the risk of being one of, I quote, 'a laddish gaggle of leerers' I would remind you that the BAA is an angling club for young, old, men and women alike. I sent several photographs in which reflected different aspects of fishing, only one of a fish, which was considerably larger than Lynn Dyson's, but I didn't get my knickers in a twist because none were chosen. The 2012 cover conveys what fishing is, a good day out for anyone and everyone.

Would a photo of a 30lb carp which hooked itself on a somewhat dodgy rig and hauled in on 25lb line warrant any more merit, and yes I do sit for three days at a time several times a year in my bivvy waiting for a fish to hook itself, but it 'aint fishin'.

So good for you Lynn, well done.

Graham Beck.

PS not related to above, just a thought, would a non fish picture of the month be worth inclusion, many venues are very scenic.

Ed: Thanks for both your letters (January and above) about the 2012 handbook. We initially had 3000 copies of the Guide to Waters 2012 printed, 2400 have already been sold with only 600 remaining, so it looks like they are popular.

I like your idea of none fish pictures. As you have probably seen we have already had pictures of snakes, hawks, turtles, dragonflies, and teddy bears. I will include a new section for none fish pictures from our venues such as scenic shots and wildlife.

Hi, I am replying to an article a few months ago from a news letter when you asked for any ideas about spending of any club money. I enjoy fishing Cotheridge very much, and find it one of the most beautiful stretches, but (along with EVERY other angler I have talked to about this) find that exiting onto the main road is a lottery and a death trap waiting to happen, which stops me fishing there. As I'm sure you know there is no visibility coming onto the road at a blind corner and it must be only luck that has stopped any accidents / fatalities. If some money could be spent improving the situation either with the addition of an exit mirror, or reduction of any visual obstacles / both, this

would be money well spent and benefit to the club, which should not be too expensive, especially considering pressures from the Health and Safety Executive nowadays.

Best regards,

Derek Gabb.

Ed: I raised your concern at the BAA Executive Meeting on 2nd February.

When the Fisheries Team visit Cotheridge each spring to cut back the bank side vegetation, they also cut back the hedge either side of the exit to maximise visibility and will continue to do this.

As we do not own the land by the exit we are limited in what we can do. Your suggestion of the BAA putting a mirror opposite the exit to aid visibility was rejected for the following reasons; we do not own the land and we would inherit an obligation to ensure the mirror was maintained in good order in the event of its damage or theft. It was also suggested at the meeting that the BAA should approach the road authority to install a mirror, again this was considered unlikely to be acted upon as such improvements tend to be driven by accident rates rather than the need for prevention.

Ref: Chris Harper's letter about litter on the Stour.

I've fished the Stour a few times this year - albeit before the recent rainy season which may have increased the raised issue - and have seen a few bottles, cans and plastic bags snagged in bushes etc, but these were mainly not due to anglers. And I do say 'mainly' as tins pushed into the undergrowth do incriminate the angler to some extent, so not perfect.

It also must be remembered that the Smestow Brook, the major tributary of the Stour, enters the river towards the upstream end of the stretch, and the brook flows through major residential areas (Wolverhampton for one) and thus a certain amount of detriment will enter via this source, esp when we have the major amounts of rainfall as we have had recently and then it gets left behind as water levels/flow rates drop again either snagged in trees or on the water's edge. Also the Stour is very close to the canal, a busy dual carriageway and a housing estate so perhaps bags/papers from boats, cars, gardens and bins get blown across and trapped too.

Personally, I ensure my swim is clear of all litter whenever I leave a swim - and not just my own litter either but anything within reach.

If everybody did that then they'd end up just taking home their own rubbish (as there would be no other - except maybe bits of flotsam)... and as they carry it to the water's side anyway when its more cumbersome (e.g. sarnies in bags, drinks in cans/bottles) then its VERY little effort to take it away again and dispose of at home and even recycle the tins/bottles!

Steve Ridd

"You have reached your destination"

Fisheries Satnav guide

In recent editions of the Guide to Waters and on the BAA website 'Where to fish' pages, Ordnance Survey National Grid Reference Coordinates have been included for all our fisheries except canals. These are provided for anglers to quote if they need to make a 999 call from a fishery to enable the emergency services to locate them.

The table below includes all the BAA Ordnance Survey National Grid Reference Coordinates with their equivalent Latitude and Longitude values. The conversion was done using the following website;

<http://www.movable-type.co.uk/scripts/latlong-gridref.html>

My thanks to Chris Veness who created the website.

Most satnav devices accept Latitude/Longitude inputs, so you can now use your satnavs to guide you to our fisheries.

Some of our fisheries have more than one car park; the list below only provides a satnav Lat/Long reference to the car park associated with the OS reference. So if you visit one of our other fishery car parks and have your satnav with you, record its' Lat/Long reference and email the information to the BAA. I can then add it to the list and provide regular updates (that's why I've included a version number).

A small word of caution, I used my satnav when visiting Stanley fishery on the Severn (Guide page 44). As the OS reference is for a location about a ½ mile from the road down a farm track, my satnav could not plot a direct route as it does not hold a map of the track. It plotted a route to the other bank and then crossed the river where no bridge exists. In this and similar cases I will update the list with a satnav reference for the access point to the car park on the public highway.

If you find any problems or have additional Lat/Long references you want added please let us know?

Birmingham Anglers Association.
Ordnance Survey National Grid References for Emergency Services,
&
equivalent Latitude/Longitude (WGS-84) for Satnavs.
For nearest vehicular access point to fisheries by name.

Fishery	2012 Guide Page	999 OS grid ref	Satnav Latitude	Longitude
Anker				
Bolehall	7	SK 215 039	52°37'58.36"N	001°40'58.89"W
Avon				
Manor Farm	8	SP 258 587	52°13'34.86"N	001°37'22.70"W
Barton & Bidford RB	9	SP 116 514	52°09'40.33"N	001°49'51.99"W
Bidford LB, Marcliff	10	SP 093 505	52°09'11.35"N	001°51'53.12"W
Salford Priors	12	SP 081 505	52°09'11.42"N	001°52'56.26"W
Cleeve Prior	14	SP 073 487	52°08'13.20"N	001°53'38.50"W
Evesham Swifts Water & Parks Farm	15	SP 044 444	52°05'54.14"N	001°56'11.23"W
Charlton, Cropthorne	16	SP 999 461	52°06'16.78"N	000°32'31.52"W
Wood Norton	17	SP 018 466	52°07'05.40"N	001°58'27.83"W
Chadbury Meadows	18	SP 002 472	52°07'24.83"N	001°59'51.95"W
Fladbury	19	SP 099 459	52°06'42.43"N	001°51'22.03"W
Lower Moor	20	SO 975 467	52°07'08.62"N	002°02'13.91"W
Wick	21	SO 957 466	52°07'05.34"N	002°03'48.54"W
Pershore L&RB, Pensham	22	SO 940 445	52°05'57.32"N	002°05'17.79"W
Nafford, Eckington	23	SO 939 417	52°04'26.69"N	002°05'22.86"W
Bredon, Wood End, Mythe Farm	24	SO 905 365	52°01'38.21"N	002°08'20.92"W
Lugg				
Dinmore, Marden, Moreton	25	SO 509 507	52°09'10.23"N	002°43'06.00"W
Mease				
Harleston	27	SK 214 116	52°42'07.57"N	001°41'02.41"W
Netherseal	28	SK 267 107	52°41'37.60"N	001°36'20.32"W
Salwarpe				
Claines	29	SO 845 602	52°14'24.78"N	002°13'39.64"W
Severn				
Aberbechan	31	SO 143 933	52°31'52.53"N	003°15'50.56"W
Forden	33	SJ 215 019	52°36'34.71"N	003°09'35.89"W
Buttington Bridge	34	SJ 256 113	52°41'40.94"N	003°06'05.60"W
Pool Quay, Maesydd & Rhyddesgyn	35	SJ 273 132	52°42'43.25"N	003°04'36.57"W
Underdale	36	SJ 507 139	52°43'15.41"N	002°43'50.14"W
Knowle Sands	37	SO 733 905	52°30'43.85"N	002°23'38.81"W
Danery	38	SO 737 910	52°31'00.10"N	002°23'17.74"W
Eardington, Brook Section	39	SO 731 887	52°29'45.56"N	002°23'48.90"W
Quatford	40	SO 738 902	52°30'34.23"N	002°23'12.20"W
Hampton Loade LB	42	SO 747 865	52°28'34.64"N	002°22'23.45"W
Hampton Loade B Section	43	SO 746 864	52°28'31.39"N	002°22'28.73"W
Arley RB, LB, Harbour, Alveley, Stanley, Hextons Farm, Kinlet	44	SO 752 818	52°26'02.62"N	002°21'55.69"W
Trimpley	45	SO 769 791	52°24'35.50"N	002°20'25.00"W
Ribbesford	46	SO 786 733	52°21'28.04"N	002°18'53.70"W
Blackstone	47	SO 789 737	52°21'41.03"N	002°18'37.93"W
Newhall Meadow	50	SO 808 709	52°20'10.66"N	002°16'56.91"W
Ladyham	52	SO 814 659	52°17'28.92"N	002°16'24.21"W
Holt Fleet, Lock Island	53	SO 822 634	52°16'08.10"N	002°15'41.51"W
Grimley, Hallow	54	SO 841 608	52°14'44.16"N	002°14'00.83"W
Severn Stoke	55	SO 848 444	52°05'53.44"N	002°13'21.27"W
Bushley	56	SO 856 387	52°02'49.03"N	002°12'38.36"W
Ripple, Birds Meadow	57	SO 878 348	52°00'43.00"N	002°10'42.37"W
Deerhurst, Apperley	58	SO 857 287	51°57'25.38"N	002°12'31.60"W

Fishery	2012 Guide Page	999 OS grid ref	Satnav	
			Latitude	Longitude
Stour				
Stourton Castle	59	SO 860 848	52°27'41.09"N	002°12'24.27"W
Teme				
Eastham Bridge	60	SO 659 690	52°19'06.56"N	002°30'03.43"W
Lindridge, Eardiston	61	SO 677 685	52°18'50.77"N	002°28'28.19"W
Puddleford	62	SO 687 677	52°18'25.09"N	002°27'35.12"W
Broadwas	63	SO 753 555	52°11'51.46"N	002°21'43.43"W
Cotheridge	64	SO 775 551	52°11'38.85"N	002°19'47.46"W
Leigh & Ox Bow Lake	65	SO 771 545	52°11'19.37"N	002°20'08.38"W
Stanford Bridge	67	SO 715 658	52°17'24.15"N	002°25'06.70"W
Bransford	68	SO 804 532	52°10'37.76"N	002°17'14.33"W
Trent				
Handsacre	69	SK 090 166	52°44'50.63"N	001°52'02.54"W
Pools				
Uckinghall	70	SO 864 376	52°02'13.50"N	002°11'56.21"W
Apperley	71	SO 857 287	51°57'25.38"N	002°12'31.60"W
Nordley	72	SO 685 970	52°34'13.28"N	002°27'55.65"W
Mythe Pool	73	SO 884 344	52°00'30.10"N	002°10'10.85"W
Walcot East Lake	74	SO 347 853	52°27'43.84"N	002°57'42.48"W
Stubbs	75	SP 073 487	52°08'13.20"N	001°53'38.50"W
Coppice Lake	76	SO 998 566	52°12'29.06"N	002°00'13.01"W
Version v1.0 02Feb2012				

Lost & Found

51 year old membership card

We recently received the following letter and 51 year old membership card.

*Pickering
North Yorkshire*

7th January 2012

John Williams
Secretary
Birmingham Anglers Association Ltd
30 The Old Woodyard
Hall Drive
Hagley
Worcestershire
DY9 9LQ

Dear John,

I found this 1961 Membership Card for Birmingham Anglers Association in a barn at the above address. I am sending it to you as it may be of interest. I wonder if the owner is still around and I wonder how it came to be in North Yorkshire after 50 years?

Yours sincerely,

Roland Sterry



The original owner of the card was Philip Banks of Wolverhampton. The only existing member with the same name holds senior membership and lives in Walton on the Naze, Essex.

Out of interest, the 1961 cost of ladies or junior membership was 6 shillings or 30p, the 2012 cost is £20 for ladies and £16 for juniors. This equates to an annual rate of cost increase of circa 8½% for ladies and 8% for juniors.

Lens found at Coppice Lake

Monday 9th Jan 2012. This morning I arrived at Coppice Lake early & found in the car park (inpro potigra) which I think is a bird watching lens. 15 inches long by 3¾ inches wide. Can you possible advertise on your news sheet? Hopefully someone will contact me.

Thank you,
Colin Roy Gibson
Tel 01789 740618